



CHURCHILL

**NEWFORMS**  
**DESIGN** design's excellence

Over **5 Million**  
items in stock..



**GREAT**  
Plates for..

- Sharing Dishes
- Burgers
- Salads & More



*The Colour  
Revolution*

★

**PUB & BAR**  
**PORTFOLIO**

OVER **2400** PRODUCTS IN OUR PORTFOLIO

Tabletop Inspiration for Casual Eateries & Drinking Spots



# WHY CHURCHILL?

INNOVATIVE  
NEW PRODUCT  
LAUNCHES  
3X A YEAR

EXTENSIVE  
INDUSTRY  
RESEARCH

OVER  
5 MILLION  
PIECES  
IN STOCK

DURABLE  
PRODUCTS  
BUILT TO LAST IN  
A BUSY HOSPITALITY  
KITCHEN

OVER  
2400  
PRODUCTS  
IN OUR PORTFOLIO



## PUB & BAR PORTFOLIO

### Casual Dining Inspiration

Welcome to our Bar & Pub Portfolio where we are showcasing a selection of our latest products in a casual dining setting. Bringing ideas and inspiration to the pub or bar tabletop, demonstrating how colour and shape innovation can add value to the dining experience.

Focusing on key dishes from casual dining menus, the portfolio offers creative solutions for sharers, healthy options, desserts and more.

#### CONTENTS

THE INDUSTRY	4 - 5
SHARING	6 - 9
BURGERS	10 - 13
FISH & CHIPS	14 - 17
WORLD FOOD	18 - 21
HEALTHY OPTIONS	22 - 25
BRITISH CLASSICS	26 - 29
BREAKFAST	30 - 33
SIDES	34 - 37
DESSERTS	38 - 41
HOT DRINKS	42 - 45

**NEWFORMS**  
DESIGN design's excellence

See Pages:  
X Squared 55  
Retro Blue 53  
Sala Durban 59



# Sharing

47% of new independent eateries are offering some form of sharing plates or platters. Sharing dishes or platters are a popular, relaxed style of eating, proven to build relationships between diners.



# The Industry

## Colour Revolution

Our research shows that 64% of new openings are using coloured tableware. Bringing colour to the tabletop instantly adds value and creates a wow factor.



## Eating more Drinking less

Consumers are drinking less alcohol and going out for a meal or a hot drink instead.



## Social

Diners look for eateries with a strong social media presence, seeking out the perfect place to Instagram cocktails, craft beers, colourful desserts and meals.

f churchill1795  
@churchill1795  
@churchill\_1795



## Heat & Spice

Diners are becoming more adventurous, eager to try new dishes and seek out spicy world foods.





# Sharers

Nothing brings people together like good food, from sharing small plates of sophisticated tapas or watching the sports over a few pints and a meat feast platter, to family style feasting for all ages.



Stonecast Hints

See Pages:  
Stonecast Hints 49-50  
Bit on the Side 54  
Sola Lima 59

See Pages:  
Wood 58  
Bit on the Side 54



See Pages:  
Melamine 58  
Raku 51  
Sola Durban 59



See Pages:  
Homespun 52  
Bit on the Side 54

Nothing  
brings people  
TOGETHER  
like good food



See Pages:  
Stonecast 48-49  
Raku 51  
Bit on the Side 54





Contact us on  
01782 524 517

"Sharing food over a few drinks and good company brings people together, building friendships and breaking down barriers."

See Pages:  
Stonecast Patina 50  
Bit on the Side 54  
Chefs' Plates 55  
Evolve 56  
Sola Windsor 59





# Burgers



Burgers continue to grow in popularity, regularly being named the top selling dish on pub and bar menus. Whether classic cheese burgers or added value gourmet options, burgers continue to be the star on many menus. Serving up burgers on coloured plates enhances presentation and adds style.



Burgers - The UK's Favourite Dish of 2017



Lotus  
Chefs' Plate

See Pages:  
Chefs' Plates 55  
Stonecast 48-49  
Retro Blue 53



See Pages:  
Chefs' Plates 55  
Stonecast 48-49



See Pages:  
Stonecast 48-49



See Pages:  
Homespun 52  
Plant Pots 53

See Pages:  
Homespun 52  
Stonecast 48-49

Homespun



Stonecast



Burgers  
after named  
TOP SELLING  
dish on menus



"Burgers are big business, whether a gourmet patty or a stacked up 'man vs food' style burger, they always make the best selling list"



Stonecast Hints



See Pages:  
Stonecast Hints 49-50  
Bit on the Side 54



See Pages:  
Homespun 52  
Bit on the Side 54  
White 56  
Sola Windsor 59



# Fish & Chips



Classic fish and chips remains a favourite on pub menus and chefs look for ways to add value or modernise this British dish. Diners are turning to nostalgic favourites, and coloured tableware can add to a retro or homely restaurant vibe.



See Pages:  
Chef's Plates 55  
Retro Blue 53  
Sola Durban 59

Classic Fish & Chips  
1980's  
Were sold in newspapers until the



See Pages:  
Stonecast Patina 50  
Bit on the Side 54



See Pages:  
Stonecast Hints 49-50  
Bit on the side 54  
Sola Durban 59



See Pages:  
Stonecast 48-49



"The old time favourite of the British Isles, traditional fish and chips remains popular and chefs experiment with ways to innovate this classic dish."



Stonecast  
Patina

See Pages:  
Stonecast Patina 50  
Bit on the Side 54





# World Food



Social media exposes the world to international flavours and dishes.



As diners become more adventurous they seek out world flavours and we see Mexican tacos, authentic Indian street food and oriental dishes appearing on menus. Colourful tableware breathes life, culture and authenticity into world food options.

See Pages:  
Raku 51  
Bit on the Side 54  
Cookware 53

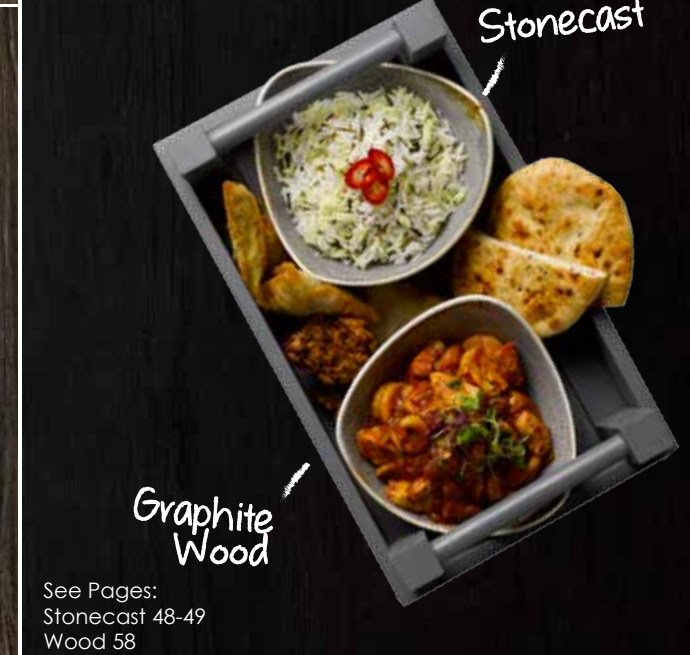


See Pages:  
Vintage Prints 53  
Stonecast 48-49

# Diners are more ADVENTUROUS than before.



See Pages:  
Raku 51  
Bit on the Side 54



Graphite  
Wood

See Pages:  
Stonecast 48-49  
Wood 58

Stonecast



"Well travelled diners, global communities and adventurous consumers are making our menus more varied, with world spices, flavours and cooking techniques"



Contact us on  
01782 524 517

See Pages:  
Homespun 52  
Bit on the Side 54  
Sola Bali 59







*vegan & vegetarian goes mainstream*



See Pages:  
Chefs' Plates 55



See Pages:  
Profile 55



See Pages:  
Stonecast Patina 50



See Pages:  
Homespun 52

# Healthy Options

As diners strive to live healthier and cleaner lifestyles we see a rise in vegetarianism and other special dietary requirements. The casual dining industry is meeting the demand for healthy options with inventive, nutritional and sustainable menu choices.



Vintage Prints

Raku

See Pages:  
Vintage Prints 53  
Raku 51

*Majority of adults are*  
**AIMING TO**  
*eat healthier*



"A rise in vegetarians, vegans, gluten free diners and dieters means menus are adapting to offer exciting options for all speciality diets"



Contact us on  
01782 524 517



See Pages:  
Stonecast 48-49  
Sola Windsor 59



Political turbulence sees diners seeking out hearty and homely comfort food classics



See Pages:  
Stonecast 48-49  
Retro Blue 53

Stonecast Patina



See Pages:  
Stonecast Patina 50  
Sola Durban 59

Consumers  
look for dishes  
MADE WITH LOCAL  
seasonal ingredients



See Pages:  
Chefs' Plates 55  
Plant Pots 53



See Pages:  
Profile 55  
Cookware 53



See Pages:  
Vintage Prints 53  
Stonecast 48-49

# British Classics



The nostalgic classics that any pub menu needs, including steak and chips, scampi, rustic pies and other comfort food pub grub. Chefs are regenerating old favourites with quality, local ingredients and innovative twists.



"A desire to embrace Britain's heritage, reduce food miles and support local business means diners look for their old favourites that are made with local, seasonal ingredients."



Stonecast  
Blueberry

See Pages:  
Stonecast 48-49  
Retro Blue 53



# Breakfast

Consumers are eating out as often for breakfast as they are for dinner, and the average spend per breakfast continues to rise. Diners are opting for relaxed, leisurely breakfasts with friends, partners or family while also seeking out more adventurous breakfast dishes.



*Diners enjoy sociable & Indulgent weekend Brunches*



*Spicy world flavours come to the breakfast table*



See Pages:  
Stonecast Patina 50  
Bit on the Side 54  
Monochrome 57  
Sola Durban 59



See Pages:  
Homespun 52  
Wood 58  
Sola Donau 59

## *Diners* eating out for BREAKFAST as often as for dinner



Stonecast Hints

Monochrome

See Pages:  
Stonecast Hints 49-50  
Stonecast 48-49  
Monochrome 57  
Sola Durban 59



See Pages:  
Stonecast Hints 49-50  
Monochrome 57



See Pages:  
Stonecast 48-49



"Adding a hint of colour to the breakfast table with Retro Blue adds value and helps to stand out from the competition."



See Pages:  
Chefs' Plate 55  
Retro Blue 53  
Sola Durban 59





# Sides



Accompaniments to main courses or snacks to share with a few drinks. Side dish options on menus offer an opportunity to bring a hint of colour to the tabletop.



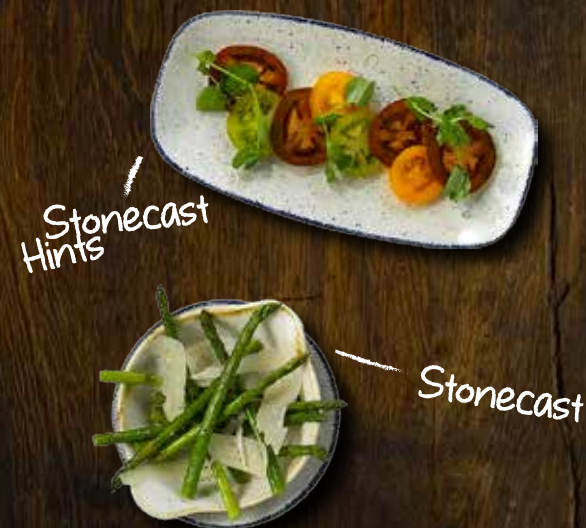
Added value sides... sweet potato fries, superfood side salads, mac & cheese, seasonal & local vegetables, artisan breads, grains & pulses.

See Pages:  
Stonecast 48-49  
Wood 58  
Cookware 53  
Rustics 54  
Sola Lima 59



See Pages:  
Lotus Chefs' Plates 55

Serve  
it family  
STYLE  
to share



Stonecast  
Hints

Stonecast

See Pages:  
Stonecast Hints 49-50  
Stonecast 48-49



See Pages:  
Bit on the Side 54



See Pages:  
Plant Pots 53



"Add value to side dishes with local ingredients, healthy options and coloured tableware"



Contact us on  
01782 524 517

See Pages:  
Retro Blue 53  
Bit on the Side 54



# Dessert



*Chefs get inventive with natural sweeteners, creating healthier options*

While diners may be striving for healthy lifestyles, there is always time to indulge and desserts are becoming more inventive, colourful and eye catching. Brightly coloured tableware creates a tabletop wow-factor for sweet treats.



*"Diners seek out social media worthy desserts"*



See Pages:  
Stonecast 48-49  
Sola Lima 59



*Raku*

See Pages:  
Raku 51  
Bit on the Side 54

*Consumers  
are drinking less,  
ORDERING PUDDINGS  
instead of cocktails*



See Pages:  
Stonecast 48-49  
Chefs' Plates 55  
Sola Lima 59



See Pages:  
Stonecast 48-49

See Pages:  
Rustics 54  
Stonecast Patina 50  
Sola Windsor 59



"Diners are eating healthier the majority of the time, and that means they deserve an indulgent, sweet treat once in a while."



Vintage Prints

See Pages:  
Vintage Prints 53  
Profile 55  
Sola Lima 59



Contact us on  
01782 524 517





Ted becomes more trendy with infusions, loose leaf tea and detox blends



Pubs and bars are comfortable and welcoming alternatives to the high street coffee shops. From business people having a meeting to shoppers taking a break, consumers are opting for a hot drink in a pub. Adding value to hot drinks offerings with barista style pouring, quality coffee roasts and stylish cups and teapots means pubs are competing with the high street.

See Pages:  
Stonecast 48-49  
Sola Durban 59

# Hot Drinks



See Pages:  
New Horizons 57  
Bit on the Side 54  
Profile 55



See Pages:  
Homespun 52.



Stonecast



See Pages:  
Monochrome 57

# Coffee

is the 2nd most  
POPULAR DRINK  
in the world after water

See Pages:  
Stonecast 47-48  
Wood 58





Contact us on  
01782 524 517



See Pages:  
Stonecast 48-49  
Sola Durban 59

"Bars and pubs become  
evermore popular destinations  
to enjoy a hot drink."



# Product Solutions

Featuring the product information for the tabletop ideas and inspiration showcased in the Pub & Bar Portfolio. For full product ranges visit [www.churchill1795.com](http://www.churchill1795.com)

## Contents

STONECAST®	48 - 49
STONECAST® HINTS	49 - 50
STONECAST® PATINA	50
STUDIO PRINTS® RAKU	51
STUDIO PRINTS® HOMESPUN	52
VINTAGE PRINTS	53
RETRO BLUE	53
BIT ON THE SIDE PLANT POTS	53
COOKWARE	53
BIT ON THE SIDE	54
RUSTICS	54
CHEFS' PLATES	55
PROFILE	55
EVOLVE	56
COUNTER SERVE	56
WHITE	56
MONOCHROME	57
NEW HORIZONS	57
BUFFETSCAPE WOOD	58
MELAMINE	58
SOLA	59





# Stonecast®

For full item range see [www.churchill1795.com](http://www.churchill1795.com)

-  **Nutmeg Cream**  
Code: SNMS
-  **Cornflower Blue**  
Code: SCFS
-  **Peppercorn Grey**  
Code: SPGS
-  **Duck Egg Blue**  
Code: SDES
-  **Spiced Orange**  
Code: SSOS
-  **Berry Red**  
Code: SBRS
-  **Barley White**  
Code: SWHS
-  **Mustard Seed Yellow**  
Code: SMSS
-  **Blueberry**  
Code: SBBS

Stonecast is available in nine colourways, refer to the colour guide to check what items are available in each colour. Replace the first four letters of the below product reference codes with the colour codes.



**COUPE PLATE**  
SWHSEV121 32.4cm 12 1/4"  
CTN QTY 6  
SWHSEV111 28.8cm 11 1/4"  
SWHSEV101 26cm 10 1/4"  
CTN QTY 12  
As seen on pages 15, 26, 28, 29



**COUPE PLATE**  
SWHSEVP81 21.7cm 8 2/3"  
SWHSEVP61 16.5cm 6 1/2"  
CTN QTY 12  
As seen on pages 34, 42, 45



**COUPE BOWL**  
SWHSEVB91 24.8cm 9 3/4"  
113.6cl 40oz  
SWHSEVB71 18.2cm 7 1/4"  
42.6cl 15oz  
CTN QTY 12  
As seen on pages 31



**ORGANIC ROUND PLATE**  
SWHSOG111 28.6cm 11 1/4"  
SWHSOG101 26.4cm 10 3/8"  
SWHSOG8 1 21cm 8 1/4"  
SWHSOG7 1 18.6cm 7 1/2"  
CTN QTY 12  
As seen on pages 11



**DEEP COUPE PLATE**  
SWHSPD271 28.1cm 11" H: 3.7cm  
SWHSPD251 25.5cm 10" H: 3.5cm  
SWHSPD221 22.5cm 8 3/4" H: 2.7cm  
CTN QTY 12  
As seen on pages 19, 24, 25.



**BARLEY WHITE CHEFS' OBLONG PLATE**  
No. 4 SWHSXO141 35.5 x 18.9cm  
13 3/8" x 7 3/8"  
CTN QTY 6  
No. 3 SWHSXO111 29.8 x 15.3cm  
11 3/4" x 6"  
CTN QTY 12



**TRIANGLE PLATE**  
SWHSTR121 31.1cm 12 1/4"  
CTN QTY 6  
SWHSTR101 26.5cm 10 1/2"  
SWHSTR9 1 22.9cm 9"  
SWHSTR7 1 19.2cm 7 3/4"  
CTN QTY 12  
As seen on pages 28, 29, 39



**TRIANGLE BOWL**  
SWHSTRB91 23.5cm 9 1/4"  
60cl 21oz  
SWHSTRB71 18.5cm 7 1/4"  
37cl 13oz  
SWHSTRB61 15.3cm 6"  
26cl 9oz  
CTN QTY 12  
As seen on pages 19, 34, 39



**ZEST BOWL**  
SWHSZE121 34cl 12oz  
H: 6.5cm 4 1/8"  
Dia: 12.1cm 2 1/2"  
CTN QTY 12  
As seen on pages 4, 5, 7



**RIPPLE CHIP MUG**  
SWHSRPCM1 28cl 10oz  
H: 9.5cm 3 3/8"  
Dia: 8.3cm 3 1/4"  
CTN QTY 12  
As seen on pages 4, 7, 10, 11, 15, 19, 34



**RIPPLE DIP POT**  
SWHSRPD21 11cl 4oz  
H: 7cm 2 3/8"  
Dia: 6.2cm 2 1/2"  
CTN QTY 12  
As seen on pages 11, 15, 19



**BARLEY WHITE OVAL EARED DISH**  
SWHSIOEN1 23.2 x 12.5cm  
9 1/8 x 5"  
38cl 13.4oz  
SWHSSOEN1 20.5 x 11.3cm  
8 1/8 x 4 3/8"  
25.5cl 9oz  
CTN QTY 6  
As seen on pages 27



**BARLEY WHITE LASAGNE DISH**  
SWHSLASN1 16 x 12 x 5cm  
6 3/8 x 4 3/4 x 2"  
60cl 21.1oz  
CTN QTY 12  
As seen on pages 27



**BARLEY WHITE ROUND EARED DISH**  
SWHSLREN1 17.5 x 21.5cm  
7 x 8 1/2"  
59cl 20.8oz  
SWHSSREN1 15 x 18cm 5 3/8 x 7 1/8"  
30cl 10.6oz  
CTN QTY 6  
As seen on pages 31, 35, 39



**SAUCE DISH**  
SWHSSD3 1 9cl 3oz  
H: 4cm Dia: 8cm  
CTN QTY 12  
As seen on pages 4, 7



**CAPPUCCINO CUP**  
SWHSCB281 34cl 12oz  
H: 6.5cm Dia: 11cm  
CTN QTY 12  
SWHSCB201 22.7cl 8oz  
H: 5.5cm Dia: 9.5cm  
CTN QTY 12  
As seen on pages 42, 43, 44, 45



**SAUCER**  
SWHSCSS 1 15.6cm 6 1/4"  
CTN QTY 12  
(Fits SWHSCB281 & SWHSCB201)  
As seen on pages 42, 43, 44, 45



**ESPRESSO CUP**  
SWHSCBE91 10cl 3.5oz  
H: 5.5cm Dia: 6.5cm  
CTN QTY 12



**ESPRESSO SAUCER**  
SWHSESS 1 11.8cm 4 1/2"  
CTN QTY 12  
(Fits SWHSCBE91)



**BEVERAGE POT**  
SWHSSB151 42.6cl 15oz  
H: 15cm  
CTN QTY 4  
REPLACEMENT LID  
SWHSRL151  
CTN QTY 6  
As seen on pages 42, 43, 44



**JUG**  
SWHSSJ4 1 11.4cl 4oz  
H: 7cm  
CTN QTY 4  
As seen on pages 42, 44



**SUGAR BOWL**  
SWHSSSGR1 22.7cl 8oz  
H: 6.2cm  
Dia: 9.8cm  
CTN QTY 12  
As seen on pages 42, 45

# Stonecast® Hints

For full item range see [www.churchill1795.com](http://www.churchill1795.com)



**COUPE PLATE**  
SHBIEV121 32.4cm 12 3/4"  
CTN QTY 6  
SHBIEV111 28.8cm 11 1/4"  
CTN QTY 12  
SHBIEV101 26cm 10 1/4"  
CTN QTY 12  
SHBIEVP81 21.7cm 8 2/3"  
CTN QTY 12  
SHBIEVP61 16.5cm 6 1/2"  
CTN QTY 12  
As seen on pages 6, 12, 13, 35



**COUPE BOWL**  
SHBIEVB91 24.8cm 9 3/4"  
113.6cl 40oz  
CTN QTY 12  
SHBIEVB71 18.2cm 7 1/4"  
42.6cl 15oz  
CTN QTY 12



**TRIANGLE PLATE**  
SHBITR121 31.1cm 12 1/4"  
CTN QTY 6  
SHBITR101 26.5cm 10 1/2"  
CTN QTY 12  
SHBITR9 1 22.9cm 9"  
CTN QTY 12  
As seen on page 6



**TRIANGLE BOWL**  
SHBITRB91 23.5cm 9 1/4"  
60cl 21oz  
CTN QTY 12  
As seen on page 6





TRIANGLE BOWL  
SHBITRB61 15.3cm 6"  
26cl 9oz  
CTN QTY 12  
As seen on page 6



CHEFS' OBLONG  
PLATTER No.9  
SHBIXP141 35.5 x 24.5cm  
13 7/8 x 9 5/8"  
CTN QTY 6  
As seen on page 6



CHEFS' OBLONG PLATE No.4  
SHBIXO141 35.5 x 18.9cm  
13 7/8 x 7 5/8"  
CTN QTY 6  
As seen on page 6  
CHEFS' OBLONG PLATE No.3  
SHBIXO111 29.8 x 15.3cm  
11 1/4 x 6"  
CTN QTY 12  
As seen on page 35



OVAL PLATE  
SHBID12 1 30.5cm 12"  
CTN QTY 12  
SHBID10 1 25.4cm 10"  
CTN QTY 12  
As seen on pages 15, 31

CHURCHILL® super vitrified

## Stonecast® Patina

For full item range see [www.churchill1795.com](http://www.churchill1795.com)

Burnished Green  
Code: PABG

Antique Taupe  
Code: PAAT

Iron Black  
Code: PAIB

Vintage Copper  
Code: PAVC



COUPE PLATE  
PABGEV121 32.4cm 12 1/4"  
CTN QTY 6  
PABGEV111 28.8cm 11 1/4"  
PABGEV101 26cm 10 1/4"  
PABGEVP81 21.7cm 8 2/3"  
PABGEVP61 16.5cm 6 1/2"  
CTN QTY 12  
As seen on pages 8, 9, 30



COUPE BOWL  
PABGEVB91 24.8cm 9 3/4"  
113.6cl 40oz  
CTN QTY 12  
PABGEVB71 18.2cm 7 1/4"  
42.6cl 15oz  
CTN QTY 12  
As seen on page 23



TRIANGLE PLATE  
PABGTR121 31.1cm 12 1/4"  
CTN QTY 6  
PABGTR9 1 22.9cm 9"  
CTN QTY 12  
PABGTR7 1 19.2cm 7 1/4"  
CTN QTY 12  
As seen on pages 15, 16, 17, 38



TRIANGLE BOWL  
PABGTRB91 23.5cm 9 1/4"  
60cl 21oz  
CTN QTY 12  
PABGTRB61 15.3cm 6"  
26cl 9oz  
CTN QTY 12



CHEFS' OBLONG PLATE  
No.4 PABGXO141 35.5cm x 18.9cm  
13 7/8" x 7 5/8"  
CTN QTY 6  
No.3 PABGXO111 29.8cm x 15.3cm  
11 1/4" x 6"  
CTN QTY 12  
As seen on page 27



WIDE RIM BOWL  
PABGVWBL1 28cm 11"  
46.8cl 16.5oz  
CTN QTY 12



ORGANIC ROUND PLATE  
PABGOG111 28.6cm 11 1/4"  
PABGOG101 26.4cm 10 5/8"  
PABGOG8 1 21cm 8 1/4"  
PABGOG7 1 18.6cm 7 1/4"  
CTN QTY 12



ORGANIC ROUND BOWL  
PABGOGB11 25.3cm 9 7/8"  
110cl 38oz  
CTN QTY 12

Stonecast Patina is available in four colourways, refer to the colour guide to check what items are available in each colour. Replace the first four letters of the below product reference codes with the colour codes.

CHURCHILL® super vitrified

## STUDIO® PRINTS Raku

For full item range see [www.churchill1795.com](http://www.churchill1795.com)

Topaz Blue  
Code: RKTB

Quartz Black  
Code: RKBQ

Garnet Orange  
Code: RKGO

Agate Grey  
Code: RKAG

Jade Green  
Code: RKJG



COUPE PLATE  
RKBQEV111 28.8cm 11 1/4"  
RKBQEV101 26cm 10 1/4"  
RKBQEV81 21.7cm 8 2/3"  
RKBQEV61 16.5cm 6 1/2"  
CTN QTY 12  
As seen on pages 7, 23



COUPE BOWL  
RKBQEV891 24.8cm 9 3/4"  
113.6cl 40oz  
RKBQEV71 18.2cm 7 1/4"  
42.6cl 15oz  
CTN QTY 12



OVAL COUPE PLATE  
RKBQOP121 31.7 x 25.5cm  
12 1/2 x 10"  
RKBQOP581 27 x 22.9cm  
10 5/8 x 9"  
CTN QTY 12



CHEFS' OBLONG PLATE  
No.9 RKTBP141 35.5 x 24.5cm  
13 7/8" x 9 5/8"  
No.8 RKBQOBL41 30 x 19.9cm  
12" x 7 7/8"  
CTN QTY 6  
No.7 RKBQOBL31 26.1 x 20.2cm  
10 1/4" x 8"  
CTN QTY 12



CHEFS' OBLONG PLATE  
No.4 RKBQXO141 35.5 x 18.9cm  
13 7/8" x 7 5/8"  
CTN QTY 6  
No.3 RKBQXO111 29.8 x 15.3cm  
11 1/4" x 6"  
CTN QTY 12  
As seen on pages 7, 39



LOTUS CHEFS' TRIANGLE PLATE  
RKBQTC351 35 x 19cm  
13 3/4" x 7 1/2"  
RKBQTC301 30 x 20cm  
11 4/5" x 7 4/5"  
CTN QTY 6  
As seen on page 19



LOTUS CHEFS' TRIANGLE PLATE  
RKBQTC261 26 x 20cm  
10 1/4" x 7 4/5"  
CTN QTY 12



LOTUS SHALLOW TRIANGLE BOWL  
RKBQTB231 23.8 x 15.8cm  
9 2/3" x 6 1/4"  
RKBQTB271 27.8 x 19.8cm  
10 13/32" x 7 4/5"  
CTN QTY 12



DEEP COUPE PLATE  
RKAGPD271 28.1cm 11" H: 3.7cm  
RKAGPD251 25.5cm 10" H: 3.5cm  
RKAGPD221 22.5cm 8 5/8" H: 2.7cm  
CTN QTY 12  
As seen on page 18



COUPE PLATE  
RKAGEV111 28.8cm 11 1/4"  
RKAGEV101 26cm 10 1/4"  
CTN QTY 12



COUPE PLATE  
RKAGEVP81 21.7cm 8 2/3"  
RKAGEVP61 16.5cm 6 1/2"  
CTN QTY 12



OVAL PLATE  
RKAGOP121 31.7 x 25.5cm  
12 1/2 x 10"  
RKAGOP581 27 x 22.9cm  
10 5/8 x 9"  
CTN QTY 12

Raku is available in five colourways, refer to the colour guide to check what items are available in each colour. Replace the first four letters of the below product reference codes with the colour codes.



# STUDIO® PRINTS

## Homespun

For full item range see [www.churchill1795.com](http://www.churchill1795.com)

-  **Slate Blue**  
Code: SPSB
-  **Charcoal Black**  
Code: SPCB
-  **Stone Grey**  
Code: SPSG



**COUPE PLATE**  
**SPSGEV111** 28.8cm 11¼"  
**SPSGEV101** 26cm 10¼"  
**SPSGEVP81** 21.7cm 8½"  
**SPSGEVP61** 16.5cm 6½"  
 CTN QTY 12 ✪ ●●●  
 As seen on pages 7, 11



**OVAL COUPE PLATE**  
**SPSGOP121** 31.7 x 25.5cm  
 12½" x 10"  
**SPSGOP581** 27 x 22.9cm  
 10¾" x 9"  
 CTN QTY 12 ✪ ●●●  
 As seen on pages 20, 21



**RIMMED PLATE**  
**SPSGVP581** 27.6 cm 10¾"  
**SPSGVP101** 26.1cm 10¼"  
 CTN QTY 12 ✪ ●●  
 As seen on page 31



**RIMMED PLATE**  
**SPSGVP8 1** 21cm 8¼"  
**SPSGVP651** 17cm 6¾"  
 CTN QTY 12 ✪ ●●



**WIDE RIM BOWL**  
**SPSGVWBL1** 28cm 11"  
 46.8cl 16.5oz  
**SPSGVWBM1** 24cm 9½"  
 28.4cl 10oz  
 CTN QTY 12 ✪ ●●  
 As seen on page 23



**CHEFS' OBLONG PLATE**  
 No4 **SPSGXO141** 35.5 x 18.9cm  
 13¾" x 7¾"  
 CTN QTY 6 ●●  
 No3 **SPSGXO111** 29.8 x 15.3cm  
 11¾" x 6"  
 CTN QTY 12 ●●●  
 As seen on pages 11, 14



**BEVERAGE POT**  
**SPSGSB151** 42.6cl 15oz  
 CTN QTY 4 ●●  
**REPLACEMENT LID**  
**SWHSRL151**  
 CTN QTY 6 ●●  
 As seen on page 31



**CAPPUCCINO CUP**  
**SPSGCB201** 22.7cm 8oz  
 H: 5.5cm  
 Dia: 9.5cm  
 CTN QTY 12 ✪ ●●  
 As seen on pages 31, 43



**SAUCER**  
**SPSGCS1** 15.6cm 6¼"  
 (Fits SPSCB201)  
**SPSGESS1** 11.8cm 4½"  
 CTN QTY 12 ✪ ●●  
 (Fits SPSCB91)  
 As seen on pages 31, 43



**SUGAR BOWL**  
**SPSGSSGR1** 22.7cl 8oz  
 H: 6.2cm  
 Dia: 9.8cm  
 CTN QTY 12 ✪ ●●  
 As seen on page 31



**JUG**  
**SPSGSJ4 1** 11.4cl 4oz  
 H: 7cm  
 CTN QTY 4 ●●  
 As seen on page 31



**ESPRESSO CUP**  
**SPSGCEB91** 10cl 3.5oz  
 H: 5.5cm  
 Dia: 6.5cm  
 CTN QTY 12 ✪ ●●

## Vintage Prints

For full item range see [www.churchill1795.com](http://www.churchill1795.com)



**GREY ROSE CHINTZ PLATE**  
**RCG VP111** 30.5cm 12"  
 CTN QTY 6 ✪  
**RCG VP8 1** 21cm 8¼"  
 CTN QTY 6 ✪  
 As seen on pages 19, 23



**PRAGUE TOILE DEEP COUPE PLATE**  
**TOP PD271** 28.1cm 11" H: 3.7cm  
 CTN QTY 12 ✪  
**TOP PD251** 25.5cm 10" H: 3.5cm  
 CTN QTY 12 ✪  
 As seen on pages 19, 40, 41



**PRAGUE TOILE DEEP COUPE PLATE**  
**TOP PD221** 22.5cm 8¾" H: 2.7cm  
 CTN QTY 12 ✪



**CRANBERRY TOILE CHEFS' OBLONG PLATE**  
**TOC XO141** 35.5 x 18.9cm  
 13¾" x 7¾"  
 CTN QTY 6  
**TOC XO111** 29.8cm x 15.3cm  
 11¾" x 6"  
 CTN QTY 12  
 As seen on pages 27

## Retro Blue

For full item range see [www.churchill1795.com](http://www.churchill1795.com)



**ROUND PIE DISH**  
**WHBBRPDNI** 13.5cm 5¼"  
 50cl 17.6oz  
 CTN QTY 12  
 As seen on pages 26, 36, 37



**RAMEKIN**  
**WHBBLRKN1** 9cm 3½"  
 19.5cl 6.9oz  
**WHBBSRKN1** 7cm 2¾"  
 9cl 3.2oz  
 CTN QTY 24  
 As seen on pages 2, 3, 10, 15, 26, 28, 29, 32, 33



**PEBBLE PLANT POT**  
**BCPEPL121** 9 x 9.7cm  
 2¾" x 3½"  
 34cl 12oz  
 CTN QTY 12  
 As seen on pages 11, 27, 35



**PEBBLE PLANT POT**  
**BCPEPL2 1** 5.5 x 5.8cm  
 2¼" x 2¼"  
 5.7cl 2oz  
 CTN QTY 12  
 As seen on pages 11, 27

## Cookware

For full item range see [www.churchill1795.com](http://www.churchill1795.com)

Cookware is available in three colourways, refer to the colour guide to check what items are available in each colour. Replace the first four letters of the below product reference codes with the colour codes.

-  **White**  
Code: WH
-  **Black**  
Code: BCBK
-  **Red**  
Code: RED



**LARGE RAMEKIN**  
**BCBKLRKN1** 9cm 3½"  
 19.5cl 6.9oz  
 CTN QTY 24 ○●●  
 As seen on page 18



**SMALL RAMEKIN**  
**BCBKSrKN1** 7cm 2¾"  
 9cl 3.2oz  
 CTN QTY 24 ○●●  
 As seen on pages 14, 34



**ROUND PIE DISH**  
**BCBKRPDNI** 13.5 x 5cm  
 5¼" x 2"  
 50cl 17.6oz  
 CTN QTY 12 ○●●  
 As seen on page 27



Bit on the side is available in five colourways, refer to the colour guide to check what items are available in each colour. Replace the first four letters of the below product reference codes with the colour codes.

## Bit on the side

For full item range see [www.churchill1795.com](http://www.churchill1795.com)

-  **White**  
Code: WH
-  **Cinnamon**  
Code: BCBR
-  **Sapphire**  
Code: BCBL
-  **Ripple Green**  
Code: BCGR
-  **Onyx**  
Code: BCBK



**RIPPLE DIP POT**  
**BCBRRPD41** 7 x 6.2cm  
2 7/8" x 2 1/2"  
11cl 4oz  
CTN QTY 12   
**BCBRRPD21** 5.9 x 5cm  
2 1/3" x 2"  
5.7cl 2oz  
CTN QTY 12   
As seen on pages 7, 8, 9, 15, 16, 17, 19, 20, 21, 39, 43



**RIPPLE CHIP MUG**  
**BCBRRPCM1** 9.5 x 8.3cm  
3 3/8" x 3 1/4"  
28cl 10oz  
CTN QTY 12   
As seen on pages 12, 13, 15, 36



**SNACK BOWL**  
**BCBRRP101** 12 x 5.7cm  
4 7/8" x 2 1/4"  
28cl 10oz  
CTN QTY 12   
As seen on pages 6, 7, 8, 9, 12, 13, 15, 16, 18, 30



**RIPPLE DIP DISH**  
**WH RPDD1** 11.3 x 3.5cm  
4 1/2" x 1 1/3"  
14cl 5oz  
CTN QTY 12   
As seen on page 7



**RIPPLE BOWL**  
**BCBRSBRP1** 13 x 7.4cm  
5 1/8" x 2 7/8"  
56cl 19.7oz  
CTN QTY 6   
As seen on page 35



**RIPPLE SNACK BOWL**  
**BCBRRP6 1** 10.4 x 4.9cm  
4" x 2"  
17cl 6oz  
CTN QTY 12 



**LID/SIDE PLATE**  
**BCBRSBLD1** 14.6cm 5 1/2"  
CTN QTY 6 

## Rustics

For full item range see [www.churchill1795.com](http://www.churchill1795.com)



**DEEP SKILLET PAN**  
**ZCBRPN2 1** 24.5cm 9 5/8"  
57cl 20oz  
CTN QTY 6



**SMALL SKILLET PAN**  
**ZCBRPN1 1** 23cm 9"  
37cl 13oz  
CTN QTY 6  
(Fits Lid ZCBRLD1 1)  
As seen on pages 34, 38



**LIDDED STEW POT**  
**ZCBRLSPT1** 14cm 5 1/2"  
43cl 15oz  
CTN QTY 6



**REPLACEMENT LID**  
**ZCBRLD1 1**  
CTN QTY 6  
(Fits ZCBRHPD 1 & ZCBRPN1 1)

## Chefs' Plates & Lotus

For full item range see [www.churchill1795.com](http://www.churchill1795.com)



**CHEFS' TRIANGLE PLATE**  
**WH TC35 1** 35 x 19cm  
13 3/4" x 7 1/2"  
CTN QTY 6  
**WH TC30 1** 30 x 20cm  
11 3/4" x 7 7/8"  
CTN QTY 6  
As seen on pages 10, 11



**CHEFS' TRIANGLE PLATE**  
**WH TC26 1** 26 x 20cm  
10 1/4" x 7 7/8"  
CTN QTY 12  
As seen on page 39



**TRIANGLE SHALLOW BOWL**  
**WH TB27 1** 27.8 x 19.8cm  
10 7/8" x 7 3/4"  
CTN QTY 12  
**WH TB23 1** 23.8 x 15.8cm  
9 3/8" x 6 1/4"  
CTN QTY 12  
As seen on pages 22, 35



**CHEFS' OBLONG PLATE**  
No. 9 **WH XP141** 35.5 x 24.5cm  
13 7/8" x 9 5/8"  
CTN QTY 6  
No. 8 **WH OBL41** 30 x 19.9cm  
12" x 7 7/8"  
CTN QTY 6  
As seen on pages 2, 3, 8, 9, 27, 32, 33



**CHEFS' OBLONG PLATE**  
No. 7 **WH OBL31** 26.1 x 20.2cm  
10 1/4" x 8"  
CTN QTY 12  
No. 6 **WH OBL21** 23.7 x 15.7cm  
9 1/3" x 6 1/8"  
CTN QTY 12



**CHEFS' OBLONG PLATTER**  
No. 4 **WH XO141** 35.5 x 18.9cm  
13 7/8" x 7 3/8"  
CTN QTY 6  
No. 3 **WH XO111** 29.8 x 15.3cm  
11 3/4" x 6"  
CTN QTY 12  
As seen on page 15



**CHEFS' OBLONG PLATE**  
No. 2 **WH XO101** 26.9 x 12.7cm  
10 1/2" x 5"  
CTN QTY 12  
No. 1 **WH XO7 1** 20 x 12.1cm  
7 7/8" x 4 3/4"  
CTN QTY 12



**CHEFS' OBLONG PLATE**  
No. 5 **WH OBL11** 15.4 x 12.6cm  
6" x 5"  
CTN QTY 12

## Profile

For full item range see [www.churchill1795.com](http://www.churchill1795.com)



**PROFILE DEEP COUPE PLATE**  
**WH PD271** 28.1cm 11"  
CTN QTY 12   
**WH PD251** 25.5cm 10"  
CTN QTY 12   
**WH PD221** 22.5cm 8 5/8"  
CTN QTY 12   
As seen on page 23



**PLATE**  
**WH VP131** 33cm 13"  
**WH VP111** 30.5cm 12"  
**WH VP581** 27.6cm 10 7/8"  
**WH VP101** 26.1cm 10 1/4"  
**WH VP9 1** 23.4cm 9 1/8"  
**WH VP8 1** 21cm 8 1/4"  
**WH VP651** 17cm 6 5/8"  
CTN QTY 12   
As seen on page 27



**JUG**  
**WH SJ8 1** 22.7cl 8oz  
H: 8.5cm  
CTN QTY 4  
**WH SJ4 1** 11.4cl 4oz  
H: 7cm  
CTN QTY 4



**JUG**  
**WH SJ2 1** 5.6cl 2oz  
H: 5cm  
CTN QTY 12  
As seen on pages 40, 43



CHURCHILL® super vitrified

# Evolve

For full item range see [www.churchill1795.com](http://www.churchill1795.com)



COUPE PLATE  
WH EV121 32.4cm 12¾"  
CTN QTY 6



COUPE PLATE  
WH EV111 28.8cm 11¼"  
CTN QTY 12



COUPE PLATE  
WH EV101 26cm 10¼"  
CTN QTY 12



COUPE PLATE  
WH EVP81 21.7cm 8½"  
CTN QTY 12  
As seen on pages 8, 9



COUPE PLATE  
WH EVP61 16.5cm 6½"  
CTN QTY 12



COUPE BOWL  
WH PLC21 31cm 12"  
240cl 84.5oz  
CTN QTY 6



COUPE BOWL  
WH EVB91 24.8cm 9¾"  
113.6cl 40oz  
CTN QTY 12



COUPE BOWL  
WH EVB71 18.2cm 7¼"  
42.6cl 15oz  
CTN QTY 12

CHURCHILL® super vitrified

# Counter Serve

For full item range see [www.churchill1795.com](http://www.churchill1795.com)



STRAIGHT SIDED  
DELI JAR  
WH SDJ 1 11cm 4¾"  
51cl 18oz  
CTN QTY 4  
As seen on pages 8, 9

CHURCHILL® super vitrified

# White

For full item range see [www.churchill1795.com](http://www.churchill1795.com)



MINI SAUCE BOAT  
WH MSB 1 11.2cl 4oz  
H: 6.5cm  
Dia: 11cm  
CTN QTY 6



BUTTER PAD  
WH BP 1 10cm 4"  
CTN QTY 24



VINEGAR / OIL BOTTLE  
WH VB 1 16cl 6oz  
H: 13cm  
CTN QTY 6



SANDRINGHAM  
SALT & PEPPER  
WH SS 1 8.4cm 3¼"  
CTN QTY 12  
WH PS 1 8.4cm 3¼"  
CTN QTY 12  
As seen on page 14

CHURCHILL® super vitrified

# Monochrome

For full item range see [www.churchill1795.com](http://www.churchill1795.com)

Monochrome is available in three colourways, refer to the colour guide to check what items are available in each colour. Replace the first four letters of the below product reference codes with the colour codes.

**Sapphire**  
Code: MOBL  
Saucer: MOMB

**Cinnamon**  
Code: MOBR  
Saucer: MOVC

**Onyx**  
Code: MOBK  
Saucer: MOIB

**White**  
Code: WH  
Saucer: WH



CAPPUCCINO CUP  
MOBLCB281 34cl 12oz  
H: 6.5cm  
Dia: 11cm  
CTN QTY 12  
MOBLCB201 22.7cl 8oz  
H: 5.5cm  
Dia: 9.5cm  
CTN QTY 12  
As seen on pages 30, 31, 34



SAUCER  
MOMBCSS 1 15.6cm 6¼"  
CTN QTY 12  
(Fits MOBLCB281, MOBRBC281, MOBKC281,  
MOBLCB201, MOBRBC201, MOBKC201,  
MOBLVM121, MOBRVM121 & MOBKVM121)  
MOMBESS 1 11.8cm 4½"  
CTN QTY 12  
(Fits MOBLCB91, MOBRCEB91 & MOBKCEB91)  
As seen on page 30



ESPRESSO CUP  
MOBLCB91 10cl 3.5oz  
H: 6.5cm  
Dia: 5.5cm  
CTN QTY 12



MUG  
MOBLVM121 34cl 12oz  
H: 11cm  
Dia: 8cm  
CTN QTY 12  
As seen on page 43



BOWL  
MOBLRBL61 13.2 X 6.3cm  
5½" X 2½"  
47cl 16oz  
CTN QTY 12



SMALL COUPE SAUCER  
WH BS4 1 12cm 4¾"  
CTN QTY 24



LARGE COUPE SAUCER  
WH BS6 1 16cm 6¼"  
CTN QTY 24

CHURCHILL® super vitrified

# New Horizons

For full item range see [www.churchill1795.com](http://www.churchill1795.com)



CAFE LATTE MUG  
HOROMCL 1 34cl 12oz  
HORBMC1 1 34cl 12oz  
HORYMCL 1 34cl 12oz  
HORGMC1 1 34cl 12oz  
CTN QTY 12



CAFE LATTE MUG  
HORBCLL1 22.4cl 8oz  
HORYCCL1 22.4cl 8oz  
HORGCCL1 22.4cl 8oz  
HOROCC11 22.4cl 8oz  
CTN QTY 24



CAPPUCCINO CUP  
HORGCB281 28cl 10oz  
HOROCC281 28cl 10oz  
HORBCC281 28cl 10oz  
HORYCB281 28cl 10oz  
CTN QTY 24



CAPPUCCINO CUP  
HOROCB201 19.6cl 7oz  
HORBCC201 19.6cl 7oz  
HORYCB201 19.6cl 7oz  
HORGCB201 19.6cl 7oz  
CTN QTY 24  
As seen on page 43



ESPRESSO CUP  
HORYCEB91 9cl 3oz  
HORGCEB91 9cl 3oz  
HOROCEB91 9cl 3oz  
HORBCEB91 9cl 3oz  
CTN QTY 24



SMALL COUPE SAUCER  
WH BS4 1 12cm 4¾"  
CTN QTY 24



LARGE COUPE SAUCER  
WH BS6 1 16cm 6¼"  
CTN QTY 24



# buffetscape® wood

For full item range see [www.churchill1795.com](http://www.churchill1795.com)



**LARGE WOODEN CRATE**  
**ZCAWLWCR1** 38 x 24 x 4.8cm  
 15" x 9½" x 1¾"  
**ZCAWMWCR1** 30 x 20 x 4.8cm  
 11¾" x 7¾" x 1¾"  
 CTN QTY 4



**SMALL WOODEN CRATE**  
**ZCAWSMCR1** 30 x 11.8 x 4.8cm  
 11¾" x 4¾" x 1¾"  
 CTN QTY 4



**LARGE RECTANGULAR STAND**  
**ZCAWLRST1** 42.7 x 18.4 x 15.5cm  
 16¾" x 7¼" x 6"  
 CTN QTY 2



**LARGE ROUND STAND**  
**ZCAWLRST1** H: 15cm 5¾"  
 Dia: 25cm 9¾"  
**ZCAWSRST1** H: 10cm 4"  
 Dia: 15cm 6"  
 CTN QTY 4  
 As seen on page 7



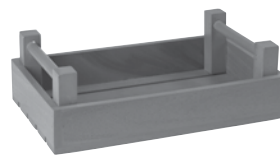
**SMALL ORGANIC BOARD**  
**ZCAWOB21** 32 x 17cm  
 12¾" x 6¾"  
**ZCAWOB31** 24 x 12.5cm  
 9½" x 5"  
 CTN QTY 4  
 As seen on page 7



**LARGE ORGANIC BOARD**  
**ZCAWOB11** 45.5 x 14.5cm  
 18" x 5¾"  
 CTN QTY 4  
 As seen on page 7



**LARGE GRAPHITE DELI BOARD**  
**ZCAWGGDD1** 40 x 16.5cm  
 15¾" x 6½"  
 CTN QTY 4  
 As seen on page 34



**RECTANGULAR GRAPHITE CRATE**  
**ZCAWRGTC1** 34 x 20 x 10cm  
 13 x 7¾ x 3¾"  
 CTN QTY 4  
 As seen on page 19



**ACACIA LARGE BOARD**  
**ZCAWLMBD1** 20 x 29cm  
 7¾" x 11¾"  
 CTN QTY 4  
 As seen on page 43



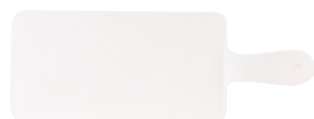
**RECTANGULAR CRATE/RISER**  
**ZCAWRCTC1** 33 x 20 x 10cm  
 13" x 7¾" x 4¾"  
 CTN QTY 4



**SQUARE CRATE/RISER**  
**ZCAWSQRC1** 20 x 20 x 10cm  
 7¾" x 7¾" x 4¾"  
 CTN QTY 4

# Melamine

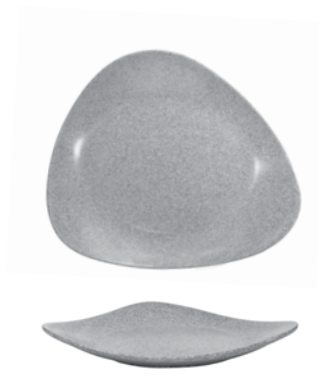
For full item range see [www.churchill1795.com](http://www.churchill1795.com)



**WHITE HANDLED PADDLE BOARD**  
**ZPL HPW1** 26.6 x 14cm  
 10½" x 5½"  
 CTN QTY 4  
 (37.3cm inc handle)  
 14 5/8" inc handle)  
 As seen on page 7



**GRANITE HANDLED PADDLE BOARD**  
**ZPL HPG1** 26.6 x 14cm  
 10½" x 5½"  
 CTN QTY 4  
 (37.3cm inc handle)  
 14 5/8" inc handle)  
 As seen on page 7



**GRANITE LOTUS MELAMINE PLATTER**  
**ZPL GLP41** 35 x 32.5cm 13¾" x 12¾"  
 CTN QTY 4

# Durban

For full item range see [www.churchill1795.com](http://www.churchill1795.com)



**TABLE FORK**  
**11DURB021** 21.2cm  
 5.0mm  
 CTN QTY 12  
 As seen on page 15, 27, 30, 31, 32, 33



**TABLE KNIFE**  
**11DURB112** 24cm  
 8.5mm  
 CTN QTY 12  
 As seen on pages 15, 27, 30, 32, 33

# Lima

For full item range see [www.churchill1795.com](http://www.churchill1795.com)



**TABLE FORK**  
**11LIMA021** 20.8cm  
 3.5mm  
 CTN QTY 12  
 As seen on pages 6, 34



**TABLE KNIFE**  
**11LIMA112** 23.7cm  
 7.5mm  
 CTN QTY 12  
 As seen on page 6

# Windsor

For full item range see [www.churchill1795.com](http://www.churchill1795.com)



**TABLE FORK**  
**11WIND021** 20.8cm  
 3.0mm  
 CTN QTY 12  
 As seen on pages 14, 25



**TABLE KNIFE**  
**11WIND111** 24.5cm  
 7.0mm  
 CTN QTY 12  
 As seen on page 14

# Donau

For full item range see [www.churchill1795.com](http://www.churchill1795.com)



**TABLE FORK**  
**11DONA021** 21.2cm  
 5.0mm  
 CTN QTY 12  
 As seen on page 31



**TABLE KNIFE**  
**11DONA112** 23.5cm  
 8.0mm  
 CTN QTY 12  
 As seen on page 31

# Bali

For full item range see [www.churchill1795.com](http://www.churchill1795.com)



**TABLE FORK**  
**11BALI021** 20.8cm  
 3.5mm  
 CTN QTY 12  
 As seen on pages 20, 21



**TABLE KNIFE**  
**11BALI112** 23.7cm  
 7.5mm  
 CTN QTY 12  
 As seen on pages 20, 21





CHURCHiLL®

**NEWFORMS**  
**DESIGN** design's excellence



In the printing of this brochure, every effort has been made to ensure perfect reproduction of product colours, but due to printing limitations, they may not be an exact match to the actual product.

HITWNUKUI